



CRUISE *Whitsundays*

PRODUCT INFORMATION GUIDE

2020 - 2021

WELCOME TO THE GREAT BARRIER REEF

THE 74 WHITSUNDAY ISLANDS LIE BETWEEN THE NORTHEAST COAST OF QUEENSLAND AND THE GREAT BARRIER REEF, A MASSIVE STRETCH OF CORAL TEEMING WITH MARINE LIFE. MOST OF THE ISLANDS ARE UNINHABITED. THEY'RE CHARACTERISED BY DENSE RAINFOREST, HIKING TRAILS AND WHITE SAND BEACHES. THE TOWN OF AIRLIE BEACH ON THE MAINLAND IS THE REGION'S CENTRAL HUB.

Cruise Whitsundays is the region's largest and most experienced marine operator, offering a range of day cruises and island resort connections.

Cruises visit the Great Barrier Reef, Whitehaven Beach and islands, and the multi-award winning Reefsleeper overnight experience is one of Australia's most unique accommodation options.

Resort Connections provide services between island resorts and the Whitsunday Coast, and connect the region's airports arrivals and departures.

GETTING HERE:

BY AIR

If travelling to the Whitsundays from overseas, fly into Brisbane, Cairns, Sydney or Melbourne, and then book a domestic flight into one of the two airports in the Whitsundays. Brisbane offers the best range of connecting flights into the region.

The following two airports service the Whitsundays daily:

Great Barrier Reef Airport, Hamilton Island (HTI)

Located on Hamilton Island, the airport is serviced by Virgin Australia, Jetstar, Qantas and Qantas Link with flights from Cairns, Brisbane, Sydney, Melbourne and connection points beyond. Cruise Whitsundays operates ferries from Hamilton Island to transfer passengers to Airlie Beach on the Whitsunday Coast and other island resorts.

Whitsunday Coast Airport, Proserpine (PPP)

Whitsunday Coast Airport is located near Proserpine, approximately 45 minutes to Airlie Beach. The airport is currently serviced by three domestic carriers including Virgin Australia, Jetstar and Tiger Airways. Buses and taxis meet every flight to transfer guests to Airlie Beach, or to ferries to the island resorts. Car and limousine hire is also available at the airport.

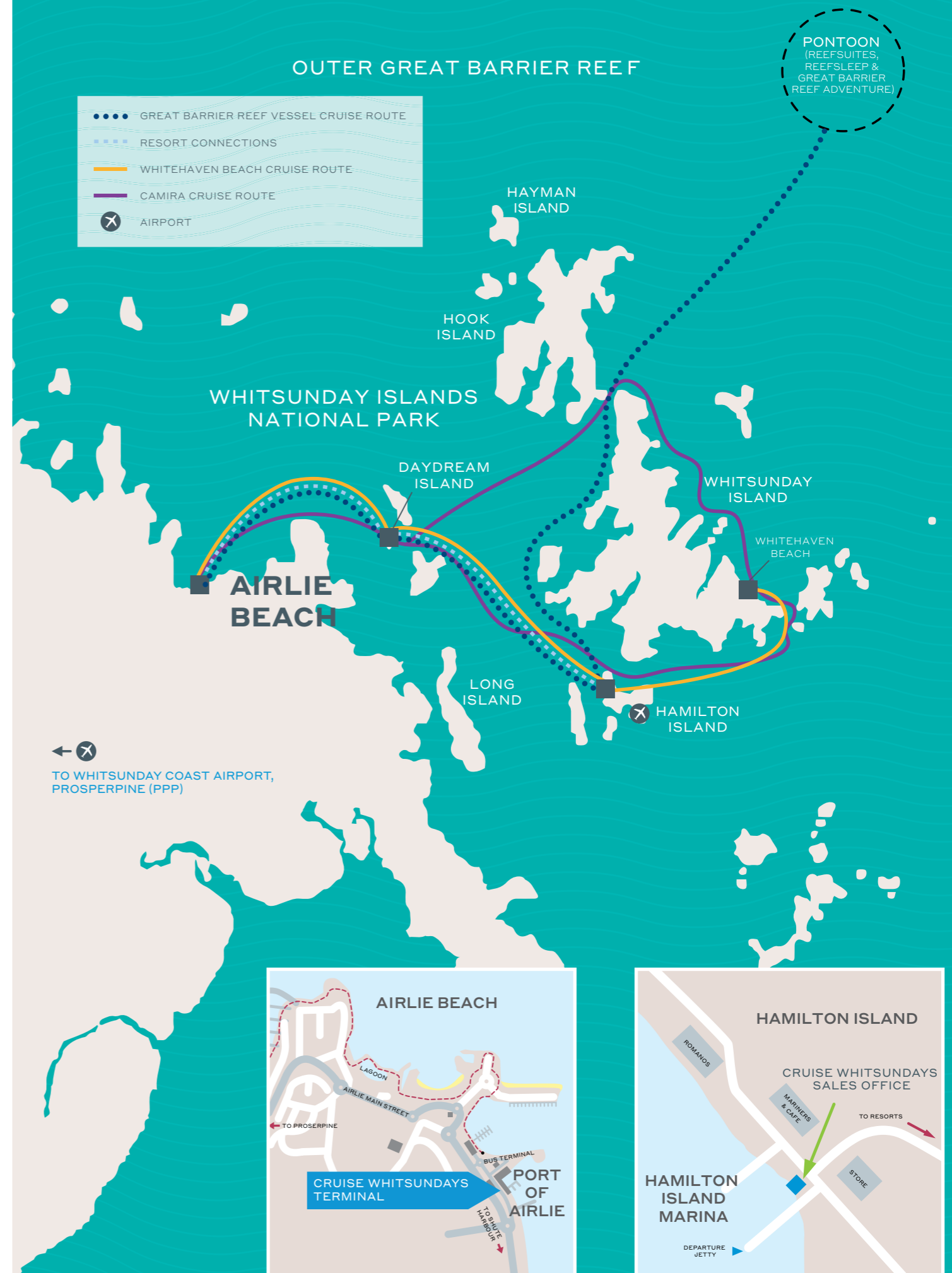
GREAT BARRIER REEF

Cruise through the Whitsunday Islands to the outer Great Barrier Reef and enjoy one of the world's most stunning natural attractions.

Cruise Whitsundays operates two pontoons moored permanently at Hardy Reef. These innovative pontoons, Reefworld and Heart Pontoon, are the base for guests to explore the Great Barrier Reef daily.

Our pontoons have a choice of areas to relax and a great range of activities. There is undercover seating and tables, sun decks, freshwater showers, change rooms and full access to the air conditioned comfort of the reef vessel. There are numerous ways to explore the reef, from the underwater observatory chamber, to the semi-submarine coral viewers, snorkelling or scuba diving.

Both Reefworld and Heart Pontoon are adjacent to a coral wall, the length of which you can explore, each with their own ecosystems with magnificent corals and a diversity of marine life found only in sheltered areas. It provides a unique world for you to discover.



REEFSUITES

AUSTRALIA'S FIRST UNDERWATER ACCOMMODATION

CRUISE WHITSUNDAYS' REEFSUITES ARE AUSTRALIA'S FIRST UNDERWATER ACCOMMODATION – OFFERING A FRONT ROW SEAT TO THE DAZZLING GREAT BARRIER REEF. SLIP BETWEEN THE SHEETS BELOW THE WATERLINE – IT'S AN INTIMATE AND TOTALLY UNIQUE ENCOUNTER WITH THIS AMAZING UNDERWATER WORLD.

Moored offshore at spectacular Hardy Reef, 40 nautical miles from Airlie Beach, Reefworld is a sophisticated setting for the overnight Reefsuite experience. Relunched in 2019, the revamped pontoon hosts day trippers, on-deck Reefsleeper guests and a lucky few who'll head below deck for a private, all-inclusive Reefsuite experience.

Reefsuites are a premium accommodation offering: subtle lighting, neutral tones, private bathrooms, high thread-count linen... But the real attraction here is the spellbinding tropical marine life beyond the suites' full-height glass walls and floor panels.

Reefsuite guests travel to Hardy Reef onboard our high-speed, modern, well-appointed vessels, arriving around 11am with the day guests. After lunch, guests can snorkel, dive, swim or take a scenic helicopter flight to see famous Heart Reef. Day visitors depart mid-afternoon, after which overnight guests have Hardy Reef and Reefworld all to themselves.

Reefsuite guests enjoy all-inclusive food and drinks: watching the sunset over the reef with a drink in hand is a memorable experience, followed by a starlit long-table dinner on the pontoon's upper deck. Seating can be arranged for private tables. Although food is served family style, you can still sit at a table for two if you choose to. After dinner, Reefsuite guests can retreat to the hushed privacy of their undersea accommodation.

After a morning awakening like no other – Reefsuites give a whole new meaning to 'a room with a view' – guests enjoy a leisurely breakfast and more exclusive reef time. Guests will head home with the day visitors in the afternoon, with Great Barrier Reef memories that will stay with them forever.

REEFSUITES LAUNCH DECEMBER 2019

FOR MORE INFORMATION VISIT:
CRUISEWHITSUNDAYS.COM/REEFSUITES



OPERATION:	Daily, 7 days a week
Port of Airlie:	Departs: 8.00am Returns: 6.10pm next day Duration: Overnight
Hamilton Island Marina:	Departs: 9.00am Returns: 5.00pm next day Duration: Overnight
Daydream Island:	Departs: 7.50am Returns: 5.40pm next day Duration: Overnight
Tour size:	Minimum (per suite): 1 pax / Maximum (per suite): 2 pax
Package includes:	<ul style="list-style-type: none">• 2 day/1 night experience• Large, modern, well-appointed vessel transfer to Hardy Reef• Overnight accommodation in a private underwater Reefsuite• All-inclusive meals: 1 breakfast, 2 morning and 2 afternoon teas, 2 buffet lunches and a million-star dinner experience• All-inclusive drinks: soft drink, beer and wine• Guided snorkelling tour• Semi-submarine guided tour
Optional extras:	<ul style="list-style-type: none">• Heli-scenic flights• Scuba diving for beginners and fully certified divers• Souvenir photos
Configuration:	King double or twin single
Meals:	Breakfast, 2 morning and afternoon teas, 2 buffet lunches and dinner are included. Soft drink, beer and wine are included.

OPTIONAL ACTIVITY UPGRADES

DISCOVER SCUBA – INTRO DIVE

There is no better place to experience the magic of your first scuba dive than at the outer Great Barrier Reef. All equipment is provided.

CERTIFIED DIVING

If you are an experienced diver, you can enjoy spectacular dives at specially selected sites. These sites offer the very best of the region with a variety of coral formations that are teeming with marine life.

HELI-SCENIC

To truly appreciate the size, scope and beauty of the Great Barrier Reef, a scenic helicopter flight is a must do! You'll be awestruck by the stunning beauty of the maze of reefs woven together to form the Great Barrier Reef and iconic Heart Reef is a sight to behold. Splash out and treat yourself to this adventure, you will not be disappointed. Bookings can be made onboard the reef vessel with your friendly Heli Representative.





REEFSLEEP

OVERNIGHT ADVENTURE

OUR PERMANENTLY MOORED PONTOON IS LOCATED ON HARDY REEF, 40 NAUTICAL MILES FROM SHORE ON THE GREAT BARRIER REEF – ONE OF THE MOST SPECTACULAR STRETCHES OF THE REEF. THIS IS THE DESTINATION FOR DAY VISITORS, BUT FOR A LUCKY FEW, IT'S A ONCE-IN-A-LIFETIME, BREATHTAKING AND MEMORABLE OVERNIGHT EXPERIENCE.

Reefsleeep guests travel to Hardy Reef on board our high speed modern, well-appointed vessel, arriving around 11am with the day guests. By day, all the amazing activities offered on our Great Barrier Reef Adventure are there to be enjoyed – diving, snorkelling, swimming with thousands of fish and scenic helicopter flights. By mid afternoon, the day guests will depart and you get Hardy Reef pontoon all to yourself and your fellow Reefsleeep guests.

Watch the sun set over the reef then see the reef really come to life in the darkness of the night. Gaze up at a million stars from a comfy swag set up on the top deck of the pontoon before the tranquillity of being in the middle of the ocean lulls you to sleep. In the morning, guests enjoy more private time with the reef before the day guests join. Optional guided snorkelling during this exclusive time at the pontoon with other overnight guests will see them visit very special spots – giant Maori Wrasse, spectacular coral formations, and myriad tropical fish, turtles and reef sharks all might make an appearance.

If you are not keen on swimming, there is the underwater viewing chamber where you can watch the reef wake up or jump on the semi-submarine and take a tour of the coral wall and see the Great Barrier Reef coming to life. On day two head home with the day guests on board the reef vessel that afternoon, taking home plenty of memories and stories to tell.

OPERATION:	Daily, 7 days a week
Port of Airlie:	Departs: 8.00am Returns: 6.10pm next day Duration: Overnight
Hamilton Island Marina:	Departs: 9.00am Returns: 5.00pm next day Duration: Overnight
Daydream Island:	Departs: 7.50am Returns: 5.40pm next day Duration: Overnight
Tour size:	Minimum: 2 pax / Maximum: 28 pax
Package includes:	<ul style="list-style-type: none">• Sleep under the stars in a unique reef bed• Large, modern, well-appointed vessel transfer to the Reef• All-inclusive meals: 1 breakfast, 2 morning and 2 afternoon teas, 2 buffet lunches and a million-star dinner experience• Spectacular dining experience under the stars• All-inclusive drinks: soft drink, beer and wine• Activities at the reef including a semi-submarine guided tour
Optional extras:	<ul style="list-style-type: none">• Heli-scenic flights• Scuba diving for beginners and fully certified divers• Souvenir photos• Guided snorkelling tours
Meals:	Breakfast, 2 morning and afternoon teas, 2 buffet lunches and dinner are included. Soft drink, beer and wine are included.

GREAT BARRIER REEF ENVIRONMENTAL MANAGEMENT CHARGE (EMC)

Included in our cruise fare is a \$6.50 fee per person which Cruise Whitsundays pays to the Australian Government.

It is used for the management and protection of the Reef by the Great Barrier Reef Marine Park Authority.

ECO BARGE

Cruise Whitsundays is a proud partner of Eco Barge Clean Seas, a local not for profit environmental organisation that was established in the Whitsundays region to protect our precious marine life and aquatic environment.



OPTIONAL ACTIVITY UPGRADES

DISCOVER SCUBA – INTRO DIVE

There is no better place to experience the magic of your first scuba dive than at the outer Great Barrier Reef. All equipment is provided.

CERTIFIED DIVING

If you are an experienced diver, you can enjoy spectacular dives at specially selected sites. These sites offer the very best of the region with a variety of coral formations that are teeming with marine life.

HELI-SCENIC

To truly appreciate the size, scope and beauty of the Great Barrier Reef, a scenic helicopter flight is a must do! You'll be awestruck by the stunning beauty of the maze of reefs woven together to form the Great Barrier Reef and iconic Heart Reef is a sight to behold. Splash out and treat yourself to this adventure, you will not be disappointed. Bookings can be made onboard the reef vessel with your friendly Heli Representative.

GUIDED SNORKEL SAFARIS

If you would like a deeper understanding of what you are seeing, take our guided snorkelling tour. One of our reef experts will take you to the most stunning coral formations and giant clams, explaining points of interest as you go.



GREAT BARRIER REEF ADVENTURE

FULL DAY CRUISE

WELCOME TO HARDY REEF, WHERE THERE ARE MORE THAN 1,600 SPECIES OF FISH AND 1,400 SPECIES OF CORAL TO BE DISCOVERED.

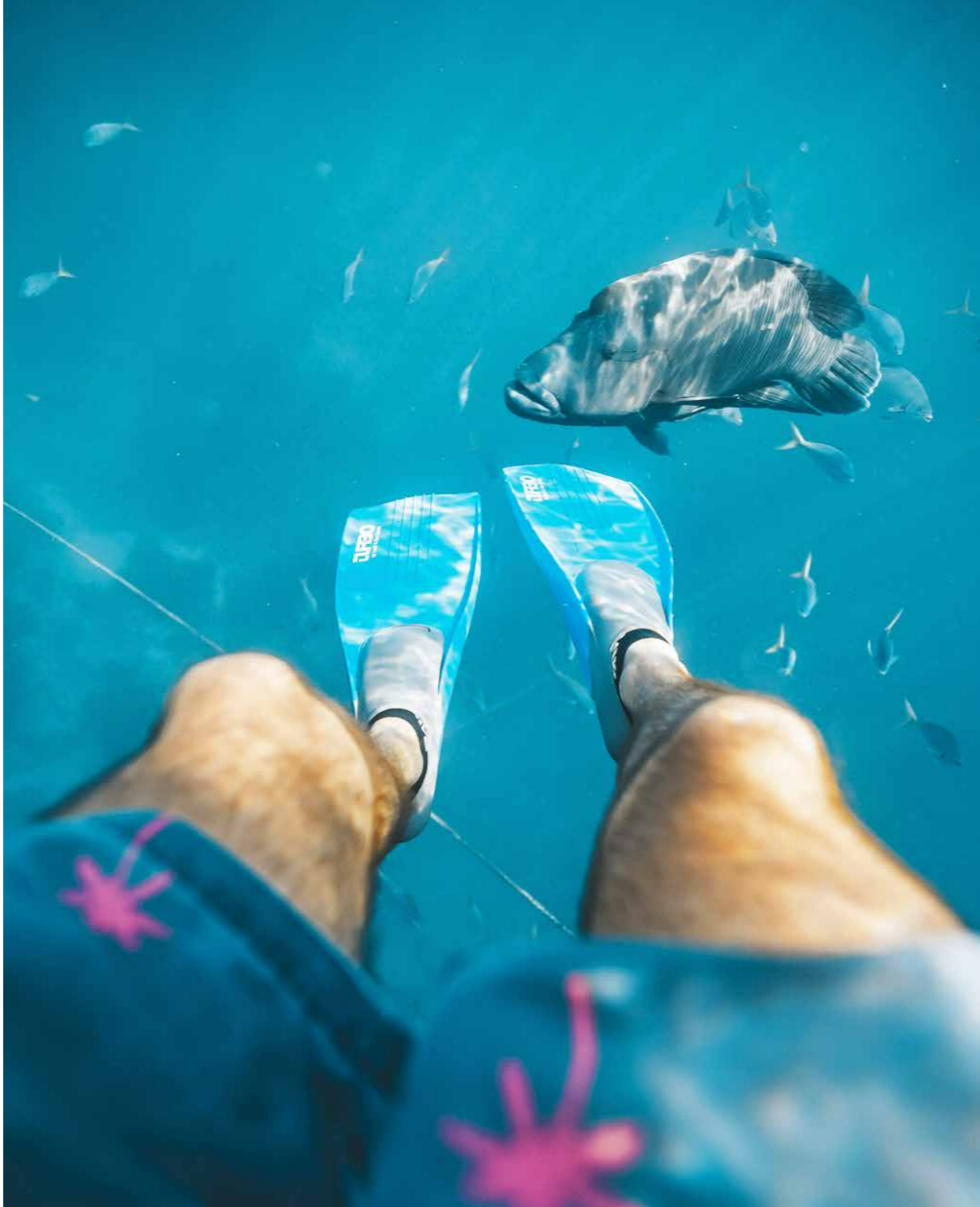
Cruise out on a large modern wave piercer through the Whitsunday Islands, stopping briefly at Hamilton Island to collect fellow passengers before continuing on to Hardy Reef. The colour of the water will take your breath away as you cruise up to the pontoon and start your activities for the day.

Spend time snorkelling, discovering colourful tropical fish and hundreds of species of coral in this magical underwater world. Then climb aboard the semi-submarine for a guided tour to explore the reef wall with one of our on board experts, where you will learn more about the Great Barrier Reef as well as the corals and marine life that make it amazing.

When you need a quiet moment to yourself, head down into the underwater observatory and watch the fish and snorkelers go by or watch the colour of the water change as the light changes.

When lunchtime comes around, you'll enjoy a delicious buffet lunch on board with fresh local prawns, a selection of cold meats and hot food, plus a fabulous array of salads to choose from. Use the rest of your afternoon to relax or take one last snorkel before heading back to port with life-long memories of the Great Barrier Reef.

For the ultimate reef adventure, add an exciting optional activity (additional cost) such as a heli-flight to fully appreciate the scale and majesty of this globally-renowned living treasure. Or head below the surface with our resident dive masters who will lead the way to the underwater highlights of Hardy Reef. Discover more about the Great Barrier Reef on a guided snorkel safari.



HEART REEF ONLY VISIBLE ON A HELI-SCENIC FLIGHT

OPERATION:	Daily, 7 days a week
Port of Airlie:	Departs: 8.00am Returns: 6.10pm Duration: Approximately 10 hours
Hamilton Island Marina:	Departs: 9.00am Returns: 5.00pm Duration: Approximately 8 hours
Daydream Island:	Departs: 7.50am Returns: 5.40pm Duration: Approximately 10 hours
Tour size:	Minimum: 50 pax / Maximum: 300 pax
Package includes:	<ul style="list-style-type: none">• All snorkelling equipment and 100+ metres of snorkelling area to explore• Large, modern, well-appointed vessel transfer to the Reef• Buffet lunch, morning and afternoon tea• Snorkelling• Semi-submarine guided tour• Underwater observatory• 4 hours at Hardy Reef
Optional extras:	<ul style="list-style-type: none">• Heli-scenic flights• Scuba diving for beginners and fully certified divers• Souvenir photos• Guided snorkelling tours

PLEASE NOTE: Half day tour also available during school holiday periods, please see the Cruise Whitsundays website for further details and departure times.





CAMIRA

SAILING ADVENTURE

A FULL DAY SAILING EXPERIENCE AROUND THE WHITSUNDAYS TAKES THIS STUNNING WATER WONDERLAND TO A NEW LEVEL.

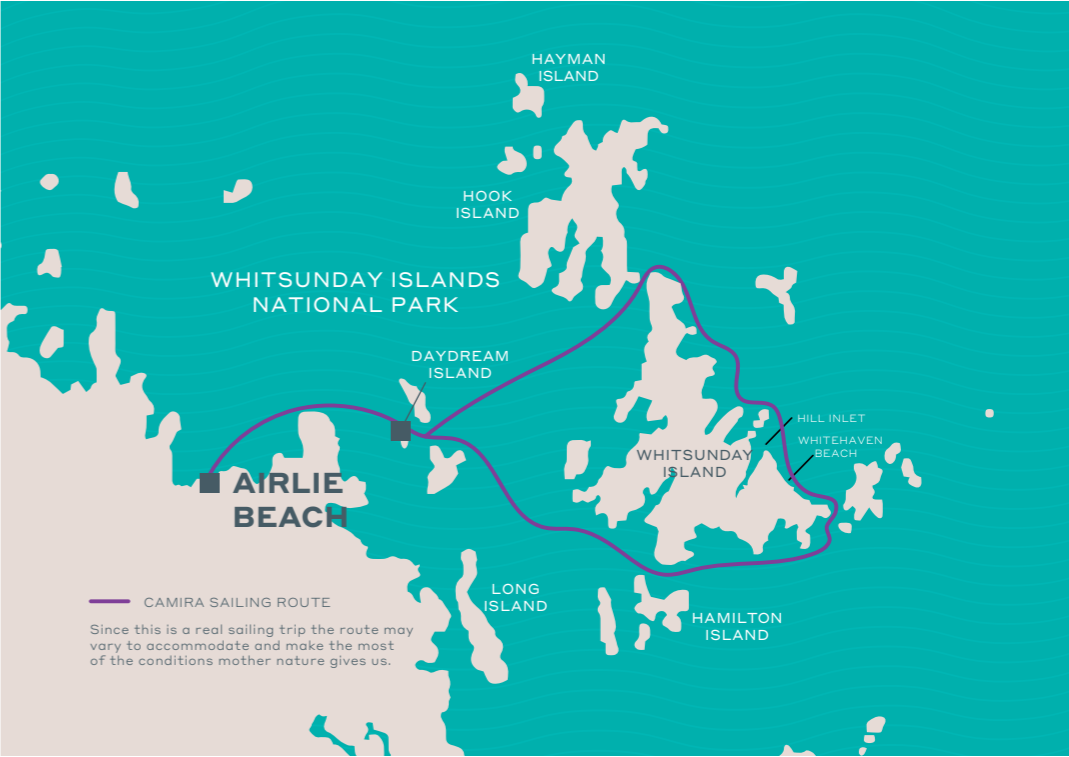
Join our experienced crew aboard a super sleek catamaran, sitting back as the Coral Sea transports you from one amazing location to the next.

Sailing directly connects and anchors guests to this pristine environment. And they can expect to dive even deeper with activities throughout the day to complete a truly enriching adventure.

This all-inclusive experience will have you exploring Australia's coastal playground. As Camira takes in all the showstoppers of the Whitsundays – including the jaw-dropping Whitehaven Beach – you will enjoy interactive shore experiences like a guided small group walk to stunning Hill Inlet. It is here you'll discover the history of the region's traditional owners, the Ngāro people.

With snorkelling gear also included and plenty of idyllic swimming spots our expert crew will take you to, expect to work up quite an appetite for the BBQ buffet lunch.

There is simply no better way to experience the highlights of the Whitsundays and to capture the essence of what attracts sailors and dreamers here from all over the world.



OPERATION:	Daily, 7 days a week
Port of Airlie:	Departs: 8.15am Returns: 5:00pm Duration: Approximately 9.5 hours
Daydream Island:	Departs: 7.05am Returns: 4.30pm Duration: Approximately 9.5 hours
Tour size:	Minimum: 15 pax / Maximum: 72 pax
Package includes:	<ul style="list-style-type: none"> • Sailing through the Whitsunday Islands • Morning and afternoon tea • BBQ buffet lunch • Soft drink, water and beer and wine from 11am • Snorkelling equipment and protective stinger suits • Beach activities • Guided walk to Hill Inlet and lookout (tidal dependant)
Meals:	This is a fully inclusive day trip. Morning and afternoon tea, a delicious BBQ lunch and all drinks are included whilst on board. Camira is licensed to serve beer and wine from 11am.

PLEASE NOTE: To keep Whitehaven Beach pristine and untouched there are no shops, cafes and only limited toilet facilities. Snacks are available for purchase on board. Please prepare accordingly.

Due to the length and activity during the day, this cruise is unsuitable for infants.





CAMIRA SUNSET SAIL

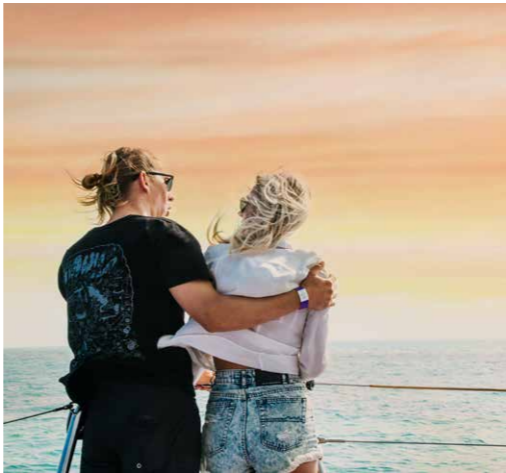
SIT BACK, RELAX AND ENJOY SPECTACULAR VIEWS ABOARD CAMIRA.

Your evening begins as the sun is still high and warm, as you cruise out into Airlie Bay. As you relax onboard and the sun dips down, the lights of Airlie Beach will spring to life offering a beautiful outlook at you head back into the Port of Airlie. Step off the boat and head into to town to carry on your night.

INCLUSIONS

- 2 hour sunset sail along the Airlie Beach waterfront
- All inclusive drinks
- Antipasto and nibbles

OPERATION:	Monday, Wednesday, Friday, Saturday
Port of Airlie:	Departs: 6.00pm Returns: 8.00pm Duration: 2 hours



WHITEHAVEN & HILL INLET CHILL & GRILL

ALL-INCLUSIVE FULL DAY CRUISE

SPEND THE WHOLE DAY EXPERIENCING ALL THE WONDERS OF THE MAGNIFICENT WHITEHAVEN BEACH AREA. INDULGE IN THE ULTIMATE EXPERIENCE OF WHITEHAVEN BEACH; FROM THE NORTHERN END EXPLORING THE SPECTACULAR HILL INLET, TO THE SOUTHERN – SWIMMING, HIKING, SUNBATHING, SOAKING UP THE SUN. NO OTHER DAY CRUISE OFFERED ALLOWS YOU SO MUCH TIME TO EXPLORE THE WONDERS OF WHITEHAVEN BEACH.

Begin your Whitehaven experience ashore at the southern end of the beach where our crew will advise of the times for the day's activities – including the trip to Hill Inlet at the northern end of the beach and the walking tours. These will vary depending on conditions.

Enjoy a leisurely cruise, in our smaller Whitehaven based vessel, along the full length of Whitehaven Beach and across Hill Inlet to the landing point. From here a guided walk following the path and history of the Whitsunday traditional owners, the Ngabo people, will lead you to the lookout and that picture postcard view! There are informative displays along the way that will provide an insight into the history, flora and stories of this picturesque area. A leisurely pace ensures all fitness levels are catered for, and guests take the time to enjoy this superb spiritual place.

On your return to the southern end of the beach, your guide will let you know departure times for optional walks to Whitehaven Beach Lookout, Chance Bay, and Solway Passage. Alternatively, if you're after a more relaxed afternoon; wander back to Whitehaven Beach to your own secluded stretch where you can laze on the beach or cool off in the azure waters.



OPERATION:	Daily, 7 days a week
Port of Airlie	Departs: 7.15am Returns: 6.10pm Duration: Approximately 11.5 hours
Hamilton Island Marina:	Departs: 8.20am Returns: 5.00pm Duration: Approximately 8.5 hours
Daydream Island:	Departs: 7.50am Returns: 5.40pm Duration: Approximately 10 hours
Tour size:	Minimum: 2 pax / Maximum: 64 pax
Package includes:	<ul style="list-style-type: none">• A gourmet burger with side salads served on the beach• Morning and afternoon tea• Guided walk to Hill Inlet and lookout• Optional walk to Whitehaven Beach lookout and Chance Bay• Up to 6 hours on Whitehaven Beach• Protective stinger suits• Dedicated host for duration of day• Beach activities including paddleboarding

PLEASE NOTE: To keep Whitehaven Beach pristine and untouched there are no shops, cafes and only limited toilet facilities. Snacks are available for purchase on board. Please prepare accordingly.

Due to the length and activity during the day, this cruise is unsuitable for infants.



WHITEHAVEN & HILL INLET ADVENTURE

ALL-INCLUSIVE FULL DAY CRUISE

INDULGE IN THE ULTIMATE WHITSUNDAYS ADVENTURE; EXPLORING SPECTACULAR HILL INLET, SNORKELLING THE FRINGING REEF, SWIMMING AND HIKING. IMMERSE YOURSELF IN THE WHITSUNDAYS WITH THE ADVENTURE THAT HAS IT ALL.

Begin your Whitehaven Beach experience ashore at the southern end of the beach, where our crew will advise of the times for the day's activities – the trip to Hill Inlet, snorkelling and hiking. These times will vary depending on conditions.

When it's time to head to Hill Inlet, jump aboard our smaller vessel for a quick trip up to the tip. Once here, you'll make your way up to the Hill Inlet lookout via a short walk. Your guide is on hand to offer information about local flora & fauna and the Ngabo tribe, who once populated the Whitsunday Islands.

After your Hill Inlet walk and photos, it's time to jump aboard and head out to your snorkelling spot, Chalkies Beach. Grab your gear and jump into the underwater world of fish and coral that populate the inner reef. Keep an eye out for a friendly turtle or manta ray who might pop in to say hello.

When you return to Whitehaven Beach, take the Whitehaven Beach lookout walk and see the beach from a whole new perspective. If you're after the relaxing option; wander back to the beach to your own secluded stretch, where you can relax or take a dip to cool off in the azure waters.



OPERATION:	Daily, 7 days a week
Port of Airlie	Departs: 7.15am Returns: 6.10pm Duration: Approximately 11.5 hours
Hamilton Island Marina:	Departs: 8.20am Returns: 5.00pm Duration: Approximately 8.5 hours
Daydream Island:	Departs: 7.50am Returns: 5.40pm Duration: Approximately 10 hours
Tour size:	Minimum: 2 pax / Maximum: 64 pax
Package includes:	<ul style="list-style-type: none">• A gourmet burger with side salads served on the beach• Morning and afternoon tea• Guided walk to Hill Inlet and Lookout• Optional walk to Whitehaven Beach lookout• Snorkelling and snorkelling equipment• Protective stinger suits• Dedicated host for duration of day• Beach games

PLEASE NOTE: To keep Whitehaven Beach pristine and untouched there are no shops, cafes and only limited toilet facilities. Snacks are available for purchase on board. Please prepare accordingly.

Due to the length and activity during the day, this cruise is unsuitable for infants.



WHITEHAVEN BEACH

HALF DAY CRUISE

THIS FANTASTIC HALF DAY CRUISE TAKES YOU PAST SOME OF THE WHITSUNDAYS MOST REMOTE AREAS, BEAUTIFUL BAYS, PEACEFUL ISLANDS AND ONTO DAZZLING WHITEHAVEN BEACH.

The waters of Solway Passage lead you to the world famous Whitehaven Beach, a definite must see in the Whitsundays.

The crystal clear aqua waters and pristine white silica sands stretch for over seven kilometres along Whitsunday Island, the largest of the 74 islands in the Whitsundays.

It is Mother Nature at her best – the most photographed beach in Australia and named 'Queensland's Most Beautiful Beach'.

You will depart from Airlie Beach and cruise via Daydream Island and Hamilton Island to collect other guests en route to Whitehaven Beach.

Once at Whitehaven, embark on a 60 minute return hike to the picturesque Whitehaven Beach lookout.

Or simply soak up the sunshine and relax in this truly spectacular stretch of paradise.



OPERATION:	Daily, 7 days a week
Port of Airlie:	Departs: 7.15am Returns: 1.45pm Duration: Approximately 6.5 hours
Hamilton Island Marina:	Departs: 8.20am Returns: 12.30pm Duration: Approximately 4 hours
Daydream Island:	Departs: 7.50am Returns: 1.10pm Duration: Approximately 5 hours
Tour size:	Minimum: 30 pax Maximum: 250 pax
Package includes:	<ul style="list-style-type: none">• Cruise the Whitsundays to Whitehaven Beach• Up to 2 hours at the southern end of Whitehaven Beach• Air-conditioned, interior saloons and seating outside• Morning tea• Swimming in the pristine waters• Beach activities including paddleboarding

PLEASE NOTE: Afternoon departures are also available, please see the Cruise Whitsundays website for departure times.



HAMILTON ISLAND FAMILY DAY

FULL DAY ADVENTURE

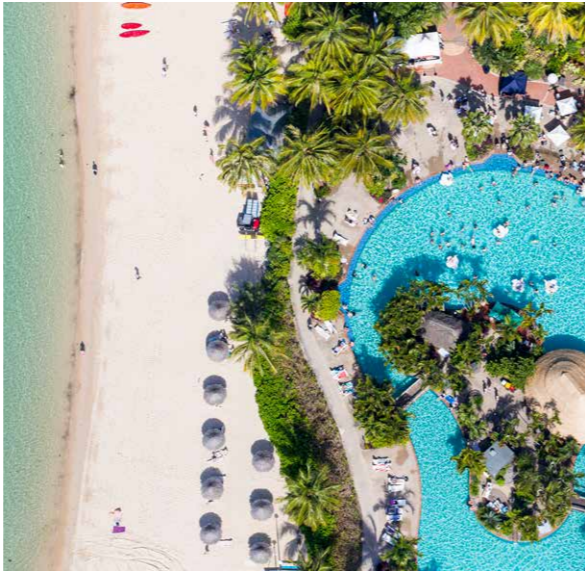
CRUISE TO FAMOUS HAMILTON ISLAND FOR A FULL DAY OF FAMILY FUN IN THE SUN.

Hamilton Island is overflowing with family-friendly activities and attractions – walking trails, sandy beaches, swimming pools, sports, wildlife and adrenalin activities. Meet the koalas at WILD LIFE Hamilton Island before fish-and-chips for lunch and an hour of Island Bowling. In the afternoon, swim in the pool, play in the sand on Catseye Beach, or just wander along the waterfront with an ice-cream.

INCLUSIONS

- Scenic return cruise to Hamilton Island
- Entry to WILD LIFE Hamilton Island
- Fish and Chips for lunch
- 1 hour at Island Bowling Alley
- Full use of island shuttle bus, pool areas and Catseye Beach
- Activities including go-karting, Jettyder and quad bikes (own expense)

OPERATION:	Daily, 7 days a week
Port of Airlie:	Departs: 8.00am Returns: 6.10pm Duration: Approximately 10 hours
Daydream Island:	Departs: 7.35am Returns: 5.40pm Duration: Approximately 10 hours



HAMILTON ISLAND FREESTYLE

FULL DAY ADVENTURE

TAKE A DAY TO EXPLORE HAMILTON ISLAND, A DIVINE TROPICAL ESCAPE.

Cruise to Hamilton Island and explore at your own pace. Hike to Passage Peak or walk up to One Tree Hill , followed by lunch overlooking the marina (pub or cafe). Ride the island shuttle buses, or cool-off at Catseye Beach or the main resort pool – an afternoon cocktail at the swim-up bar here is an essential Hamilton Island experience. The day is free for you to enjoy.

INCLUSIONS

- Scenic return cruise to Hamilton Island
- Choice of spectacular island bushwalks
- Lunch at the Marina Tavern or Manta Ray Cafe
- Full use of island shuttle bus, pool areas and Catseye Beach
- Access to shops, galleries, boutiques and restaurants

OPERATION:	Daily, 7 days a week
Port of Airlie:	Departs: 8.00am Returns: 6.10pm Duration: Approximately 10 hours
Daydream Island:	Departs: 7.35am Returns: 5.40pm Duration: Approximately 10 hours





HAMILTON ISLAND NATURE ESCAPE

FULL DAY ADVENTURE

EXPERIENCE HAMILTON ISLAND'S NATURAL BEAUTY, MEET SOME NATIVE WILDLIFE AND BREATHE SOME FRESH WHITSUNDAYS AIR.

Most of Hamilton Island is untouched native bushland – tropical wilds brimming with natural beauty and native wildlife. After breakfast with the koalas at WILD LIFE Hamilton Island, tackle the Passage Peak hike, South East Head Trail or climb One Tree Hill. After lunch (pub or picnic) cool-off at Catseye Beach or the main resort pool, or explore further on the island's free shuttle buses.

INCLUSIONS

- Scenic return cruise to Hamilton Island
- Breakfast with koalas at WILD LIFE Hamilton Island
- Choice of three spectacular island bushwalks
- Packed lunch, or lunch at the Marina Tavern
- Full use of island shuttle bus, pool areas and Catseye Beach



OPERATION:	Daily, 7 days a week
Port of Airlie:	Departs: 7.00am Returns: 6.10pm Duration: Approximately 11 hours
Daydream Island:	Departs: 7.35am Returns: 5.40pm Duration: Approximately 10 hours



THREE ISLAND GUIDED TOUR

FULL DAY GUIDED TOUR OR FULL DAY GUIDED TOUR WITH BREAKFAST

THE TROPICAL TRIFECTA! ISLAND-HOP BETWEEN HAMILTON ISLAND, DAYDREAM ISLAND AND WHITSUNDAY ISLAND (WHITEHAVEN BEACH).

Your day begins with a short cruise to Daydream Island, with informative commentary from your friendly Cruise Whitsundays guide. Enjoy breakfast (if included), take a dip in the pool or experience the Living Reef, a free-form coral lagoon that's home to 100-plus marine species. Continue to Hamilton Island on a picturesque 30-minute cruise. Explore famous Front Street, then meet your guide for lunch at Marina Tavern. Next up, cruise to Whitsunday Island and the legendary Whitehaven Beach. Play some beach cricket, swim in the crystal-clear waters or take a short bushwalk – the choice is yours.

INCLUSIONS

- Visit Daydream Island, Hamilton Island and Whitsunday Island (Whitehaven Beach) with a dedicated tour guide
- Lunch at Hamilton Island's Marina Tavern
- Experience Daydream Island's Living Reef
- Up to 2 hours at the southern end of Whitehaven Beach
- Complimentary use of Hamilton Island's scheduled Island Shuttle



OPERATION:	Daily, 7 days a week
Port of Airlie:	GUIDED TOUR Departs: 8.30am Returns: 6.20pm Duration: Approximately 10 hours GUIDED TOUR WITH BREAKFAST Departs: 7.00am Returns: 6.20pm Duration: Approximately 11.5 hours

PLEASE NOTE: This tour does not visit Hill Inlet.





TWIN ISLAND ESCAPE

FULL DAY TOUR OR FULL DAY TOUR WITH BREAKFAST AT DAYDREAM ISLAND

ICONIC HAMILTON ISLAND AND THE NEWLY REOPENED DAYDREAM ISLAND ARE ESSENTIAL WHITSUNDAYS DESTINATIONS.

First stop is Daydream Island, perfect for couples and families alike. Enjoy breakfast (if included), take a dip in the resort pool or visit the unique Living Reef coral lagoon: here's your chance to see sharks and stingrays in action at the morning fish-feeding show. Next up, cruise to Hamilton Island for a delicious lunch at Marina Tavern. Explore the island by foot, or ride the complimentary Island Shuttle service to One Tree Hill for some incredible Whitsundays views. Cool off afterwards in the resort pool, complete with swim-up bar, or take a stroll along famous Catseye Beach.

INCLUSIONS

- Picturesque return cruise between Daydream and Hamilton Islands
- Live fish-feeding show (10am daily) at Daydream Island's Living Reef
- Lunch at Marina Tavern overlooking Hamilton Island Marina
- Complimentary use of resort areas and pools on Hamilton and Daydream Islands
- Complimentary use of Hamilton Island's scheduled Island Shuttle bus service

OPERATION:	Daily, 7 days a week
Port of Airlie:	FULL DAY TOUR Departs: 8.30am Returns: 6.10pm Duration: Approximately 9.5 hours
	FULL DAY TOUR WITH BREAKFAST Departs: 7.00am Returns: 6.10pm Duration: Approximately 11 hours



WHITEHAVEN BEACH & DAYDREAM ISLAND

FULL DAY TOUR

VISIT GORGEOUS WHITEHAVEN BEACH AND EXPERIENCE PARADISE REBORN AT DAYDREAM ISLAND.

Your day begins with a cruise to the glorious, 7km-long Whitehaven Beach on Whitsunday Island: do some beachcombing, enjoy a bushwalk or wade into the warm, crystal-clear water. From here, cruise to Hamilton Island for a quick vessel change, then continue to Daydream Island for a lavish two-course lunch. The island is yours to explore in the afternoon... or just relax by the pool. Don't miss a visit to the Living Reef, one of the most unique attractions in Queensland, with a stop at the Living Reef Centre to learn more about the tropical marine life of the Great Barrier Reef.

INCLUSIONS

- Scenic return cruise through the Whitsundays, with up to 2 hours at the southern end of Whitehaven Beach
- Morning tea
- Delicious two-course lunch on Daydream Island
- Experience Daydream Island's Living Reef and Living Reef Centre
- Use of the resort areas and pools on Daydream Island

OPERATION:	Daily, 7 days a week
Port of Airlie:	Departs: 7.15am Returns: 6.20pm Duration: Approximately 11 hours



DAYDREAM ISLAND FULL & HALF-DAY TOURS

EXPERIENCE THE LAIDBACK VIBE OF THE NEWLY REOPENED DAYDREAM ISLAND – A PERFECTLY RELAXING GETAWAY.

Start your day with a scenic cruise to Daydream Island from Port of Airlie. From here you can choose your own activities: relax by the pool and soak up the ocean views or discover over 100 species of marine life in the newly extended Living Reef. A delicious two-course lunch awaits at Inkstone Kitchen & Bar. It might be tempting to order another cocktail, but unless you've got your Daydream Island accommodation booked, don't miss the last boat!

INCLUSIONS

- Explore Daydream Island at your leisure
- Relax by the resort pool and take in the ocean views
- See the Living Reef in action with a live fish-feeding show at 10am daily
- Learn more about topical marine life in the Living Reef Centre
- Delicious two-course lunch at Inkstone Kitchen & Bar

OPERATION:	Daily, 7 days a week
Port of Airlie:	HALF DAY Departs: 11.00am Returns: 3.35pm Duration: Approximately 4.5 hours
	FULL DAY Departs: 8.30am Returns: 6.20pm Duration: Approximately 8 hours
	FULL DAY WITH BREAKFAST Departs: 7.00am Returns: 6.20pm Duration: Approximately 9.5 hours



CONTACT DETAILS

COMPANY

NAME
Journey Beyond

HEAD OFFICE
Level 5, 233 North Terrace, Adelaide, SA 5000

POST
PO Box 445, Marlestone Business Centre,
MARLESTON SA 5033

WEBSITE
journeybeyond.com.au/traveltrade

EMAIL
traveltrade@journeybeyond.com



JOURNEY BEYOND SALES TEAM

General Manager Sales
Deb Falvey
deb.falvey@journeybeyond.com

NATIONAL SALES

Business Development Manager (SA, VIC, TAS, OTAs)
Matthew Dommenez
matthew.dommenez@journeybeyond.com

Business Development Manager (Wholesale)
Renee Cornelissen
renee.cornelissen@journeybeyond.com

Business Development Manager (QLD, WA, OTA's)
Pam Nielsen
pam.nielsen@journeybeyond.com

Business Development Manager (NSW, ACT & Cruise Market)
Gareth Coakley
gareth.coakley@journeybeyond.com

National Sales Coordinator
Mel Truman
melanie.truman@journeybeyond.com

National Sales Coordinator
Laura Harper
laura.harper@journeybeyond.com

INTERNATIONAL SALES

Business Development Manager (Western Markets)
Marc Leopold
marc.leopold@journeybeyond.com

Business Development Executive (Greater China)
Kristin Chen
kristin.chen@journeybeyond.com

Consultant/In Market Representation (North America)
Libby Cooke
libby@antipodal.net

Consultant/In Market Representation (UK/Europe)
Richard Howarth
rmhtravelconsulting@gmail.com

International Sales Coordinator
Nicole Zink
nicole.zink@journeybeyond.com



RATES

Please refer to attached rates sheet for tour retail rates. Cruise Whitsundays has the right to alter rates without notice.

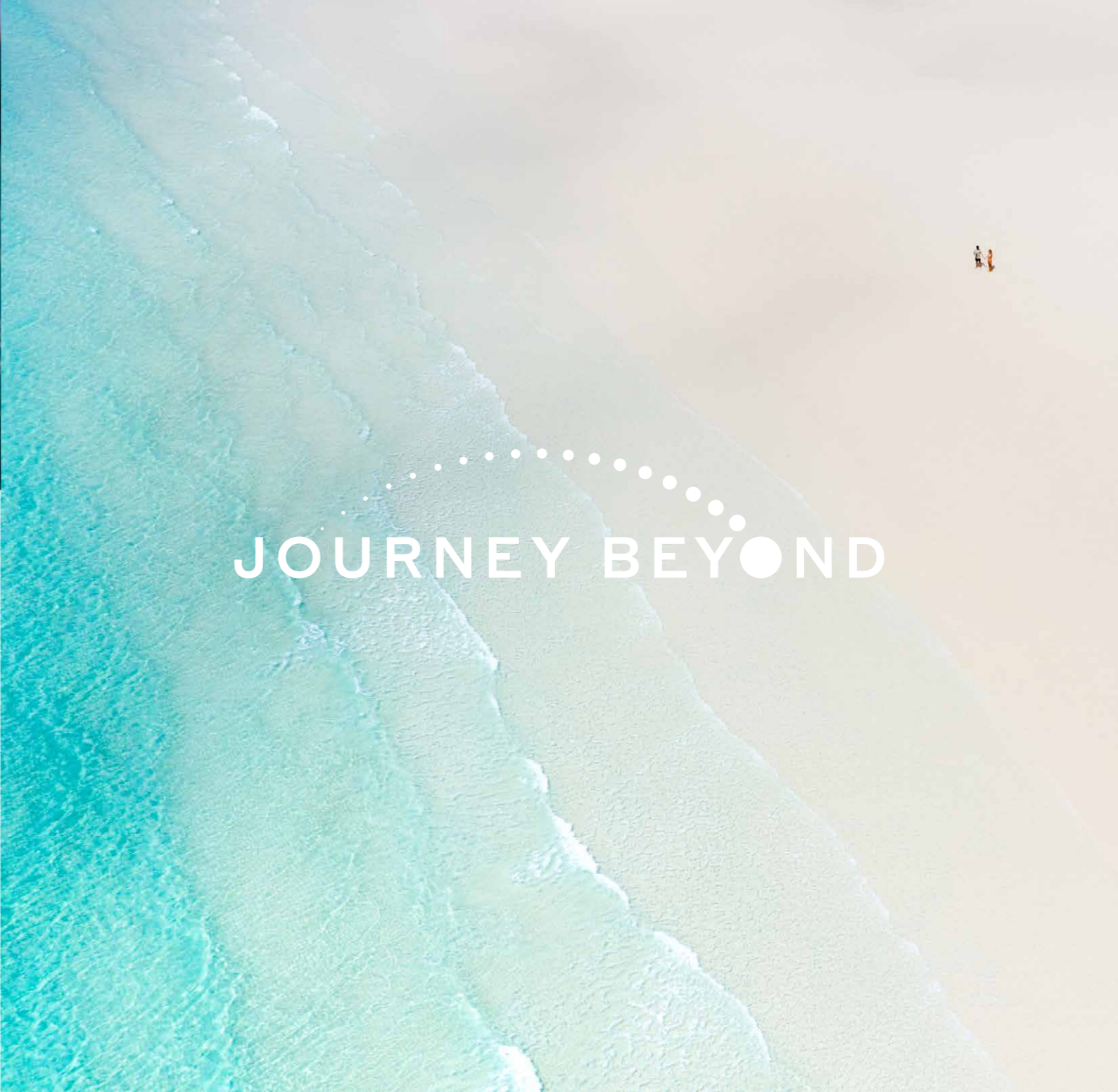
TERMS & CONDITIONS

- 1. All prices are stated in Australian dollars and include GST. Prices valid for travel from 1 April 2020 to 31 March 2021 where stated.
- 2. Reefsleeper and Reefsuite prices are available for booking from 30 September 2019 and valid for travel from 1 December 2019 until 31 March 2021.
- 3. Child fares are for children aged between the ages of 4 to 14 inclusive. Exceptions may apply, please refer to rates sheet for additional information.
- 4. Cruise Whitsundays reserves the right to alter prices, alter itineraries, apply a fuel surcharge, cancel departures, arrange alternative transport and vary itineraries and services if necessary.
- 5. All cruises are subject to sea and weather conditions particularly in the interest of passenger safety.
- 6. Should the company be forced to cancel a cruise our liability is limited to offering an alternative cruise or appropriate refund no greater than the fare paid.
- 7. Cruise Whitsundays cannot be held responsible for missed flights or consequent costs due to late arrival at airline check-in counter whatever the cause.

- 8. Travel insurance is recommended for all bookings.
- 9. Cruise Whitsundays shall not be held responsible for any property loss or damage and/or any claim resulting from personal injury or death arising whilst travelling with the company, participating in activities, on the vessel or pontoon or other company property. This disclaimer applies irrespective of the cause.
- 10. Where another company or persons operate the service such as transfers, diving and helicopter flights, Cruise Whitsundays is acting only as a Sales Agent. Responsibility and liability for the operation lies with that operator.
- 11. The helicopter scenic flights and transfers are operated by Hamilton Island Air and booking to travel with them deems acceptance the terms and conditions as published on their website www.hamiltonislandair.com.
- 12. Medical Disclosures: age and medical restrictions apply to diving activities. A medical questionnaire must be completed. Divers cannot fly for 24 hours after diving and the company accepts no liability for medical conditions experienced as a result of flying after diving. A voluntary medical disclosure will be supplied on the confirmation of booking for Reefsleeper and is to be returned to Cruise Whitsundays 24 hours prior to departure.

- 13. Group bookings and Charters: These terms and conditions DO NOT APPLY to group and charter travel. Separate booking conditions and payment terms will be provided with quotations and/or booking confirmations.
- 14. PAYMENT AND CANCELLATION FEES: Day Cruises: No show and 24 hours or less notice cancellation is 100% of fare. 24 hours - 48 hours 50% of fare. Transfer to another Cruise Whitsundays cruise with more than 48 hours' notice incurs no fee and is subject to availability. Transfer to another Cruise Whitsundays cruise with less than 48 hours' notice is subject to availability and if new fare is less than no refund will be made and if new fare is higher payment of the difference is required.
- 15. REEFSLEEP: Full payment on Reefsleeper must be received 7 days prior to departure. Cancellations must be provided in writing. No show and 24 hours or less notice cancellation fee is 100% of fare. 24 hours - 72 hours - 50% of fare. 3 - 7 days 25% of fare.

Further conditions apply, please visit www.cruisewhitsundays.com for details.



JOURNEY BEYOND

From outback to ocean, Australia is a land as diverse as it is dazzling; we transform the naturally amazing into the truly breathtaking with unforgettable travel experiences. Our iconic trains, cruises, curated packages and immersive experiences each take you on an unforgettable adventure – join us and together, let's journey beyond.

To find out more, please visit:
JOURNEYBEYOND.COM

JOURNEY BEYOND GROUP





WWW.CRUISEWHITSUNDAYS.COM